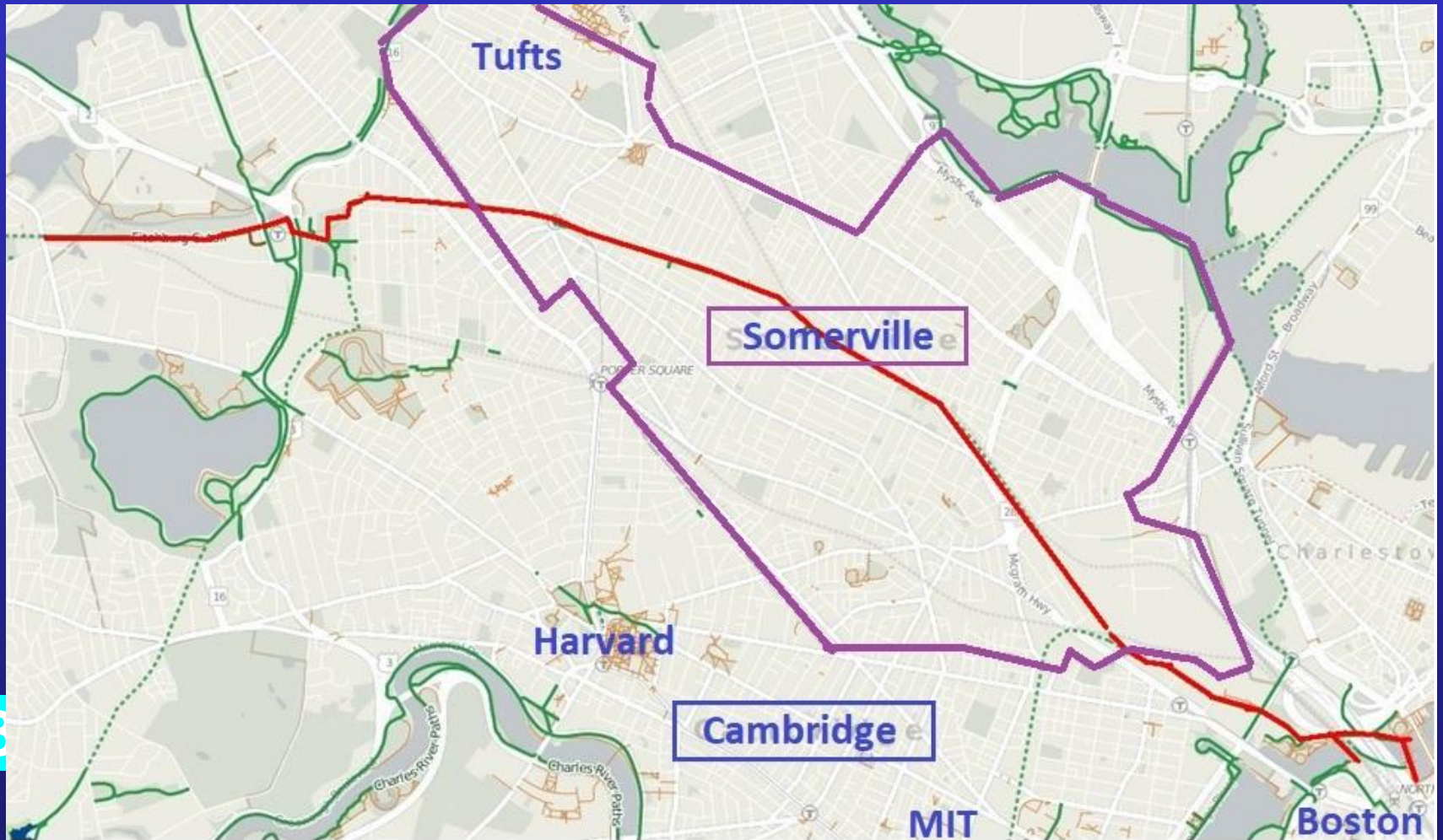


Somerville Community Path



* 3

4-mile Multi-Use Path through Somerville – densest City in New England

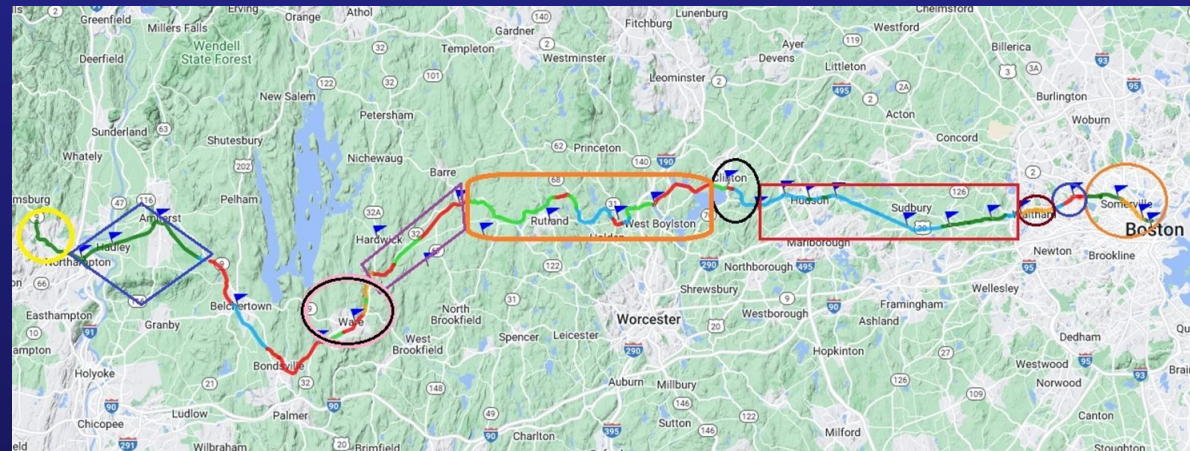
Somerville Community Path

- Rail Trail and Rail w/Trail, 14' – 70' wide
- Community Resource – largest City Green Space
- Access to Transit

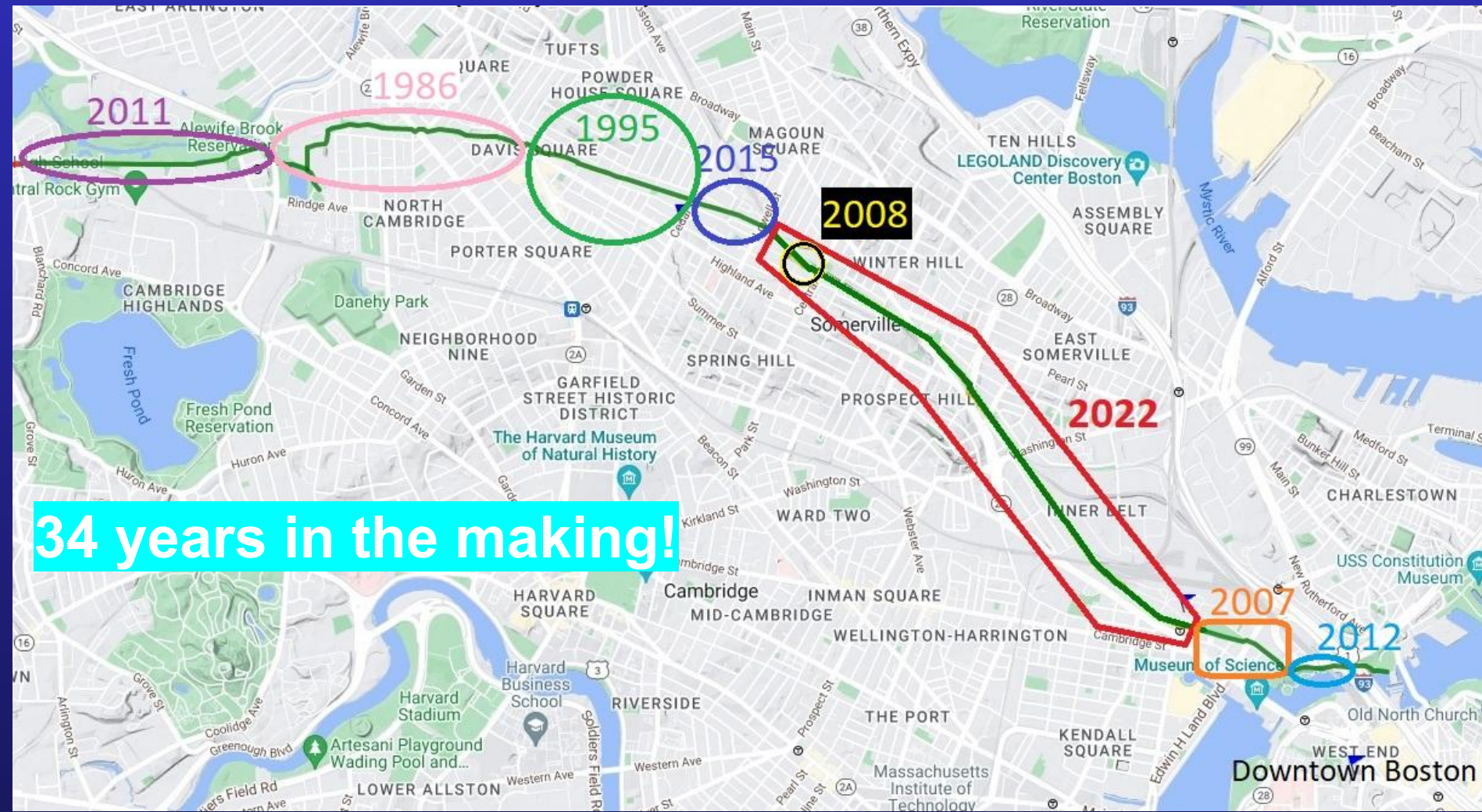


- Commuting Corridor to Cambridge and Boston

- Eastern End of 104-mile Mass Central Rail Trail, Boston to Northampton,



HISTORY - 6 miles in Boston, Cambridge and Somerville, 8 projects, starting in 1986, completed by 2022



34 years in the making!

Pre-existing Path: Most used path in MA



Somerville Community Path (Extension)

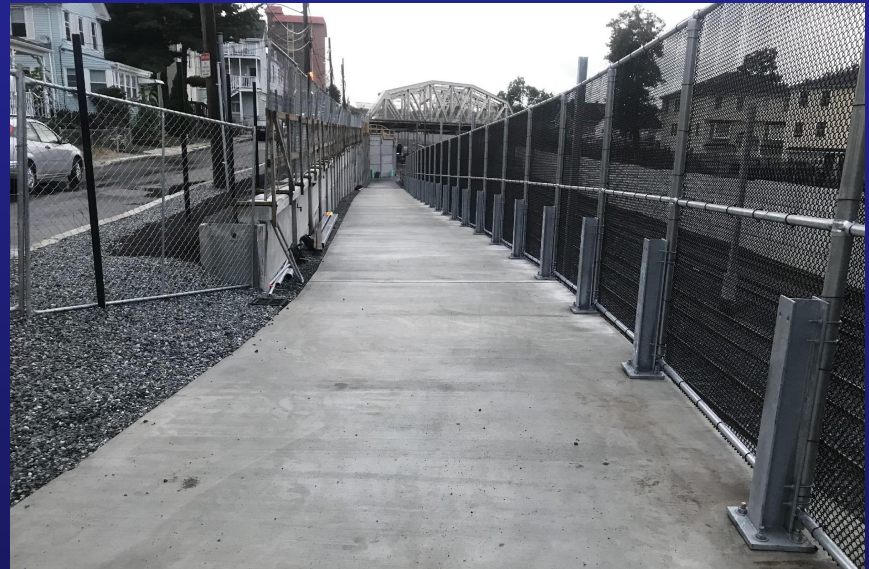
History of the 2.3-mile (CPX) Project (incremental successes)

- 1996: Community Path, along abandoned rail line, ends in the center of Somerville
- 2000: Friends of the Community Path formed to advocate to extension the Path east to Cambridge
- 2001: Prior to the commitment to construct the Green Line Extension (GLX), the corridor was offered for the Community Path – cost estimated at \$6 million
- 2004: GLX to be built for a cost of \$600 million, Path **not** to be included
- 2006: Requirement by the State that the GLX **not preclude** a future Community Path Extension
- 2009: Sections of the Community Path that are access to GLX stations **will be included**
- 2011: Friends help secure \$2 million for a ¼-mile extension from Cedar St. to Lowell St., opens 2015
- 2014: State announces that the GLX will include the full Community Path Extension!
- 2015: GLX and CPX put on hold because of projected cost overrun (\$2.8 billion >> \$2.4 billion)
- 2016: GLX scope reduced, **not to include** the last half-mile section over RR tracks to Cambridge
- 2018: Final Design and Construct bid includes the entire Community Path and the GLX - \$2.4 billion!
- 2022: GLX and CPX opens (2.2-mile CPX estimated to cost \$30 million)

Meanwhile, Significant New Infrastructure east & west of the CPX



Images of the soon to-be-completed 2.2 miles



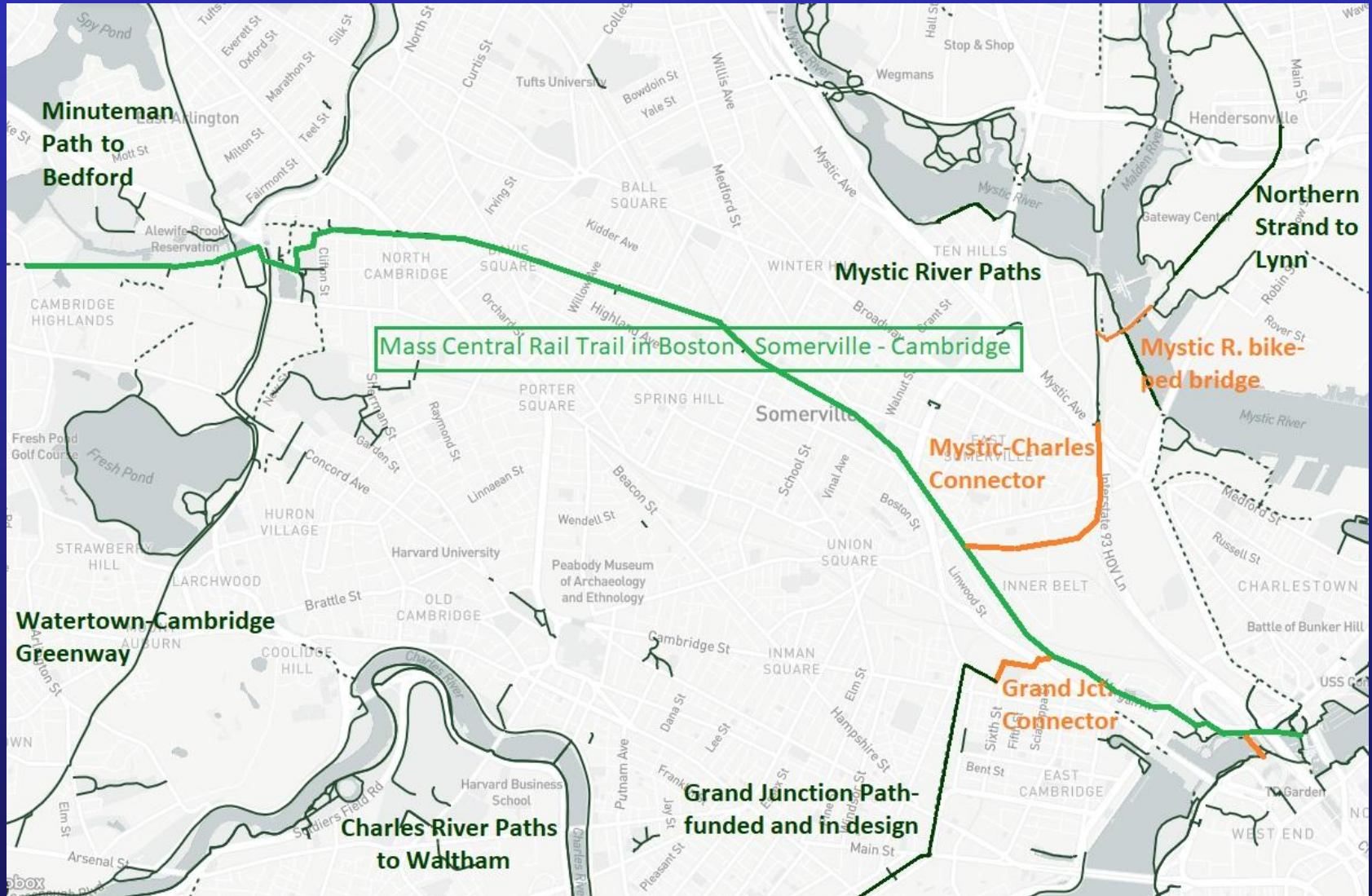
The 3,000' viaduct over rail tracks



Community Path – center of the Greenway network north of the Charles

Existing (& planned/in-design) Paths

Proposed connections to the MCRT



Historical East end of the MCRT – to North Station



Present Lock Crossing of the
Charles River to North Station

Future DrawBridge crossing
shared with Commuter trains

